



Solution Idea Name

What is the name of your solution idea?

Target User Roles

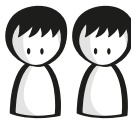
Who will use this solution? What is their role and in which department do they work?

User's Objectives

What should the target users be able to accomplish with the solution?

Relevance Indicators

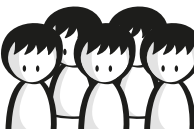
Reach: How many potential users does this solution have?



Few



Some

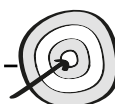


Many

Strategic Relevance: How important is this solution to achieve the organisation's targets?



Low



Med



High

Challenges / Optimizations

What challenges are being addressed?
What does the solution improve?

Business Benefit

What makes this a valuable solution for the company? What KPIs are improved?

Business Value: How would you rate the business impact of your solution idea?



Low



High

Process Steps

How does the process look now and where could the solution help?

Input data needed

*What data is needed for this use case?
What data is available?*

Main capabilities and expected output

What should the solution be able to do? What information should the solution provide and in which format?



AI Limitations

Which AI limitations could affect the use case and how? Use the limitation cards as reference.

Use Case Brief – Ethical View

Would the solution involve...

Comments

Processing identifiable personal data

Would the solution process any information relating to an identified or identifiable natural person for training purposes or during productive usage? (excludes anonymized data sets or the process of anonymizing Personal data).

☐

Yes

☐

No

☐

Not Clear Yet

Processing sensitive personal data

Would the solution include the processing of sensitive personal data like information on sexual orientation, religion, biometric data (including face imaging &/or voice recognition)?

☐

Yes

☐

No

☐

Not Clear Yet

Automated decision-making

Does the solution involve fully or partially automated decision-making? Does it include cases where no human intervention or human supervision takes place? (excluding any recommender system)

☐

Yes

☐

No

☐

Not Clear Yet

Negatively affecting individuals

Could the solution negatively affect the social well-being of individuals (health and safety), or intrude/restrict an individual's fundamental rights and freedom?

☐

Yes

☐

No

☐

Not Clear Yet

High-risks

Does the use case belong to one of the following domains: E.g. Categorisation of natural persons, Management and operation of critical infrastructure, Employment/HR, Healthcare, Private services and Public services and benefits, Law Enforcement, Migration, Democratic processes?

☐

Yes

☐

No

☐

Not Clear Yet