

Solution Idea Name

What is the name of your solution idea?

Target User Roles

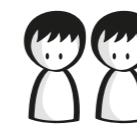
*Which are the potential user roles of this solution?
To which department do they belong?*

Main business benefit

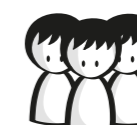
What makes this a valuable solution for the business?

Relevance Indicators

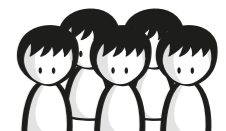
Reach: *How many potential users does this solution have?*



Few



Some



Many

Strategic Relevance: *How important is this solution to achieve the organisation's targets?*



Low



Med



High

Business Value: *How would you rate the business impact of your solution idea?*



Low



High

Challenges / Optimizations

What challenges are being addressed? What activities are being optimized and how?

Process steps

How does the process look like with the solution?

Input data needed

What data is needed for this use case? In which format? What data is available? What is proprietary data and which one is publicly available?



System capabilities

What capabilities are needed for this use case? (including, but not limited to Gen AI capabilities)



Output data expected

What data is desired as output and in which format?

Generative AI Limitations

Which Gen AI limitations could affect the use case and how? How can you deal with those limitations? Use the limitation cards as reference.

Use Case Brief – Ethical View

Would the solution involve...

Comments

Processing identifiable personal data

Would the solution process any information relating to an identified or identifiable natural person for training purposes or during productive usage? (excludes anonymized data sets or the process of anonymizing Personal data).

Yes

No

Not Clear Yet

Processing sensitive personal data

Would the solution include the processing of sensitive personal data like information on sexual orientation, religion, biometric data (including face imaging &/or voice recognition)?

Yes

No

Not Clear Yet

Automated decision-making

Does the solution involve fully or partially automated decision-making? Does it include cases where no human intervention or human supervision takes place? (excluding any recommender system)

Yes

No

Not Clear Yet

Negatively affecting individuals

Could the solution negatively affect the social well-being of individuals (health and safety), or intrude/restrict an individual's fundamental rights and freedom?

Yes

No

Not Clear Yet

High-risks

Does the use case belong to one of the following domains: E.g. Categorisation of natural persons, Management and operation of critical infrastructure, Employment/HR, Healthcare, Private services and Public services and benefits, Law Enforcement, Migration, Democratic processes?

Yes

No

Not Clear Yet