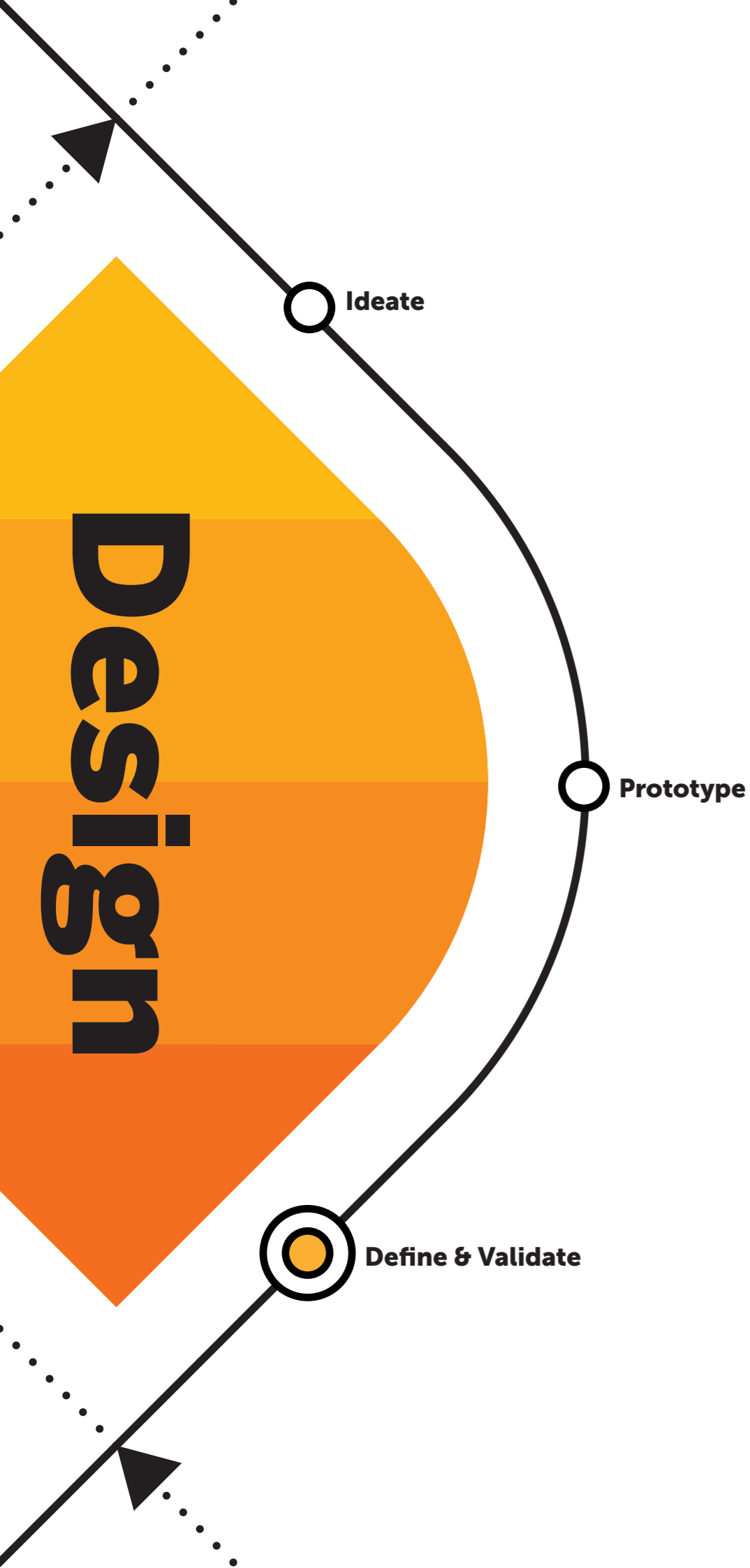


DESIGN PHASE / Joint Activity

Use Case Blueprint Diagram

Pivot from Design Thinking to Architectural Thinking by mapping user actions to architectural requirements such as applications, data and specific technical features.



Why to create a Use Case Blueprint Diagram?

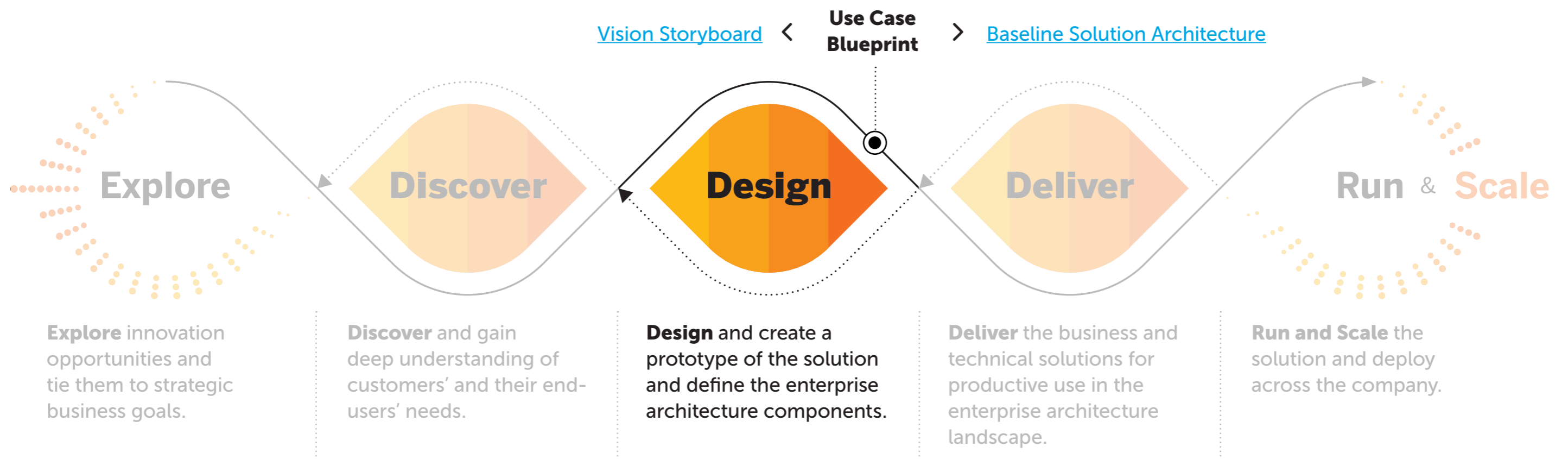
The purpose of the Use-Case Blueprint Diagram is to pivot from Design Thinking to Architectural Thinking. User-centric actions are mapped to technical aspects of the architecture, such as data, systems, and technical capabilities.

The Use-Case Blueprint diagram, with its user centricity, is the bridge to creative thinking and the Design Thinking methodology. In case you want to add more user-centricity and usability focus to your architecture, you can find additional methods under the Design Thinking category.

When to create a Use Case Blueprint Diagram?

The Use Case Blueprint Diagram is used during the Design phase to define the to-be scenario in detail. Once you have defined a to-be scenario for your solution, this activity helps you to specify the actions taken at each step by the

different users or personas, identify which data and what applications are required for each user-action, and identify technical capabilities required for each user-action along the scenario.



Lear more about SAP's Human-Centered Approach to Innovation: <https://experience.sap.com/designservices/approach>

How to create a Use Case Blueprint Diagram?



Duration
60 - 90 Minutes



Participation
3 - 5 People



Roles
Designers, Architects



Use input from

- [Statement of Architecture Work](#)
- [Stakeholder Matrix](#)
- [Solution Context](#)
- [Vision Storyboard](#)

Steps

0

Target Scenario: Create a storyboard showing how the target user interacts with the target solution. You can do this using the [Vision Storyboard](#) method. Once the storyboard is created, place the different scenes one after the other horizontally on a surface.

1

Actions: Under each Scene, write the actions performed by each persona in the system. Use a different color per persona or indicate the persona name for each action.

2

Required Data + Systems and Applications: indicate the technical requirements that need to be met in order to realize the user actions: What data is required for the actions in the scenes? Which applications and IT systems are involved in the user actions?

3

Technical Capabilities: Based on your experience, add technical capabilities that are required at a specific step or action, like IoT data ingestion, a chatbot or a workflow service, for example.

Expert Tips

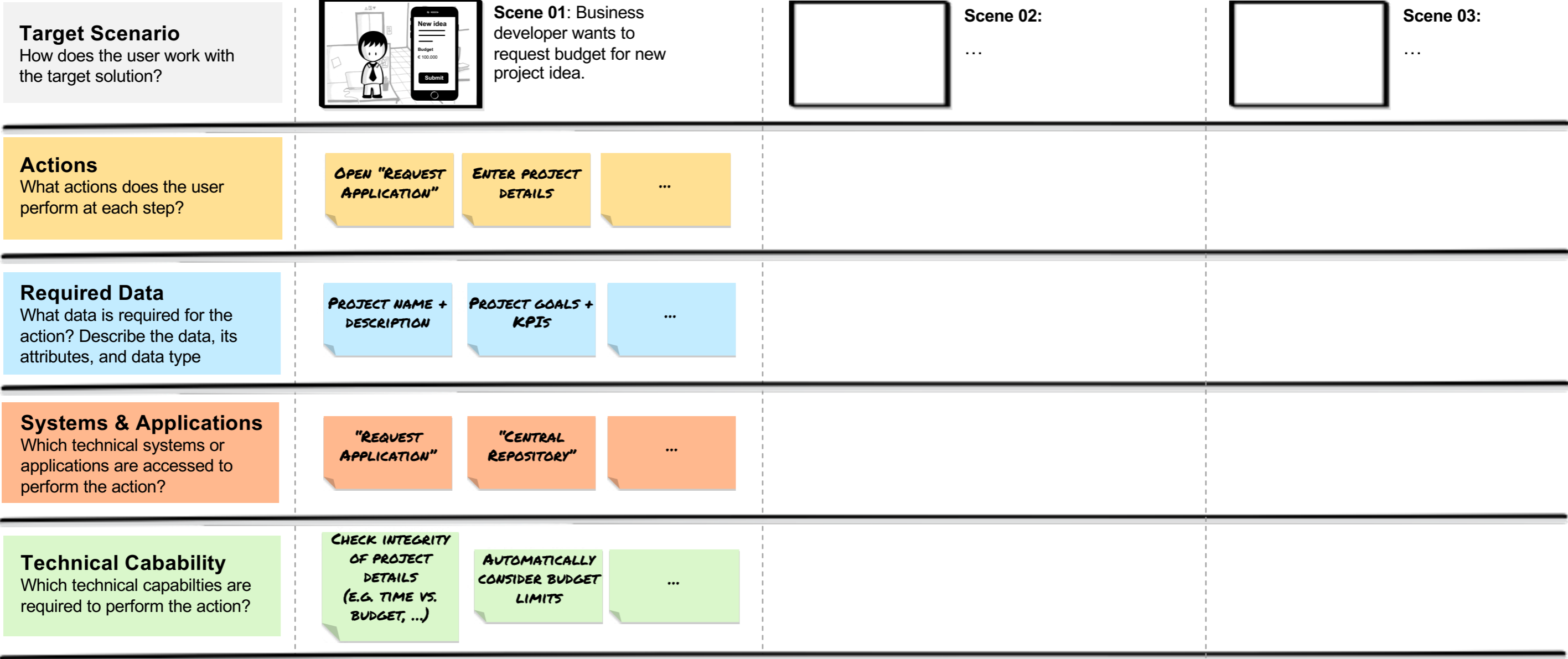
Create one Use-Case Blueprint Diagram per user and per key objective of this user. As this can clearly be a lot of work, you might want to choose the most valuable objective and user combination and will not do all possible combinations.

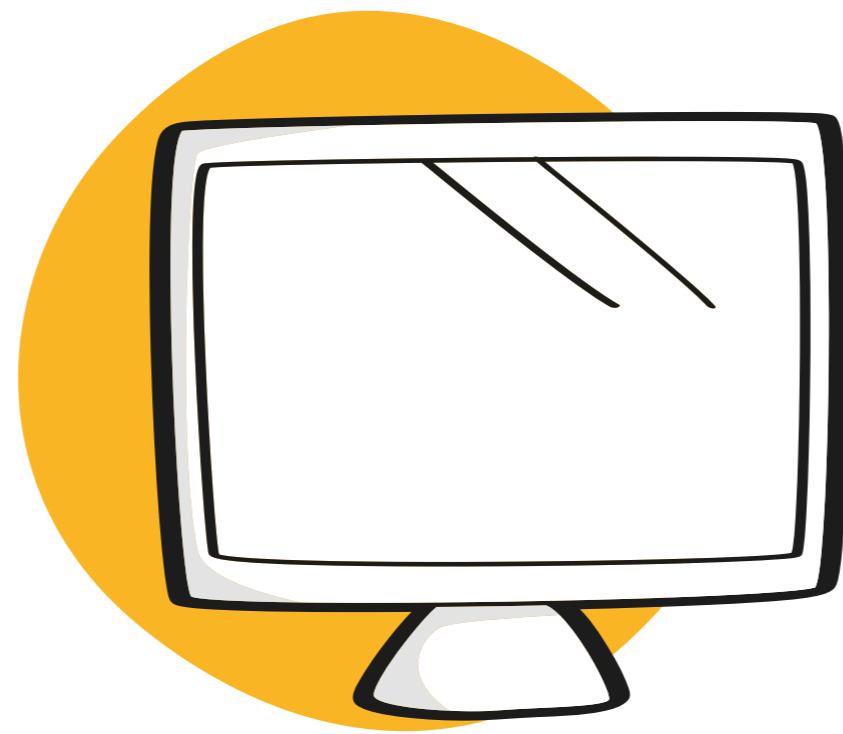
You will re-use information from the Use-Case Blueprint Diagram at later steps in the technical architecture domain. For example, the data identified, helps to understand the information flow, which is represented in the Solution Concept and the Solution Realization Diagram. Also, the identified data serves as input for the Conceptual Data Diagram.

The identified applications are used for the creation of [Baseline Solution Architecture](#), the [Solution Concept](#) and [Solution Realization Diagram](#). The identified technical capabilities support the choice of Solution Building Blocks.

Example

Use Case Blueprint Diagram





Virtual Collaboration Template

MURAL Template

Use Case Blueprint

Use-Case Blueprint | Facilitator | All changes saved | 14 | SHARE

Use-Case Blueprint

Combine the user's to-be scenario with the technical requirements for implementation

1. To-Be Scenario
(10 min)

Each participant selects an area to work in and writes her/his name.

Copy the corresponding scene of the vision storyboard with its description to your area.

2. Actions
(30 min)

1. As a team, define below the personas appearing in the to-be scenario and give them a different color to each of them.

2. Each participant writes the actions for each persona appearing in her / his scene. Use the persona's assigned color.

Ex: 1. Bill starts the tablet at his work station to check the orders for the day

3. Each participant shares her/his actions to the team for feedback.

3. Data, Systems and Capabilities
(90 min)

Step 1 30 min

What data is required for the actions in the Scene?
Write the name of each data item in a blue post-it and provide examples of the possible values. Be as detailed as possible.

Ex: Customer Name (Joan Smith), Machine status (ready, blocked, busy), etc.

Step 2 30 min

From which technical systems/ applications are the data coming from?
Write the name of the systems on an orange post-it. Cluster the data points according to the system they come from.

Ex: Webshop, SAP Analytics Cloud, etc.

Step 3 30 min

What innovation capabilities are required for the actions in the Scene?
Write the capabilities on the green post-its.

Ex: automate entity extraction with ML algorithm, data analysis

[Name Participant 01]	[Name Participant 02]	[Name Participant 03]	[Name Participant 04]	[Name Participant 05]	[Name Participant 06]
<p>Scene 01</p> <div style="border: 1px solid black; width: 40px; height: 40px; margin: 5px;"></div> <p>[Insert Description]</p>	<p>Scene 02</p> <div style="border: 1px solid black; width: 40px; height: 40px; margin: 5px;"></div> <p>[Insert Description]</p>	<p>Scene 03</p> <div style="border: 1px solid black; width: 40px; height: 40px; margin: 5px;"></div> <p>[Insert Description]</p>	<p>Scene 04</p> <div style="border: 1px solid black; width: 40px; height: 40px; margin: 5px;"></div> <p>[Insert Description]</p>	<p>Scene 05</p> <div style="border: 1px solid black; width: 40px; height: 40px; margin: 5px;"></div> <p>[Insert Description]</p>	<p>Scene 06</p> <div style="border: 1px solid black; width: 40px; height: 40px; margin: 5px;"></div> <p>[Insert Description]</p>
<p>Characters</p> <div style="display: flex; gap: 5px;"> <div style="width: 15px; height: 15px; background-color: yellow;"></div> <div style="width: 15px; height: 15px; background-color: purple;"></div> </div>					
<div style="width: 20px; height: 15px; background-color: yellow;"></div>					
<div style="width: 20px; height: 15px; background-color: cyan;"></div>					
<div style="width: 20px; height: 15px; background-color: orange;"></div>					
<div style="width: 20px; height: 15px; background-color: green;"></div>					

Access the MURAL template: <https://app.mural.co/template/ca560780-6a50-4202-8e7c-af45bffc3144/6418f2ab-dd83-442a-8f2f-2ce88fd948a1>