

## Solution Idea Name

*What is the name of your solution idea?*

## Target User Roles

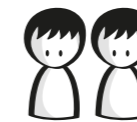
*Who will use this solution? What is their role and in which department do they work?*

## User's Objectives

*What should the target users be able to accomplish with the solution?*

## Relevance Indicators

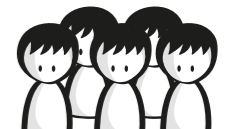
**Reach:** *How many potential users does this solution have?*



*Few*



*Some*



*Many*

**Strategic Relevance:** *How important is this solution to achieve the organisation's targets?*



*Low*



*Med*



*High*

**Business Value:** *How would you rate the business impact of your solution idea?*



*Low*



*High*

## Challenges / Optimizations

*What challenges are being addressed?  
What does the solution improve?*

## Business Benefit

*What makes this a valuable solution for the company? What KPIs are improved?*

## Process Steps

*How does the process look now and where could the solution help?*

## Input data needed

*What data is needed for this use case?*

*What data is available?*

## Main capabilities and expected output

*What should the solution be able to do? What information should the solution provide and in which format?*

## AI Limitations

*Which AI limitations could affect the use case and how? Use the limitation cards as reference.*

# Use Case Brief – Ethical View

## Would the solution involve...

Comments

### Processing identifiable personal data

*Would the solution process any information relating to an identified or identifiable natural person for training purposes or during productive usage? (excludes anonymized data sets or the process of anonymizing Personal data).*

Yes

No

Not Clear Yet

### Processing sensitive personal data

*Would the solution include the processing of sensitive personal data like information on sexual orientation, religion, biometric data (including face imaging &/or voice recognition)?*

Yes

No

Not Clear Yet

### Automated decision-making

*Does the solution involve fully or partially automated decision-making? Does it include cases where no human intervention or human supervision takes place? (excluding any recommender system)*

Yes

No

Not Clear Yet

### Negatively affecting individuals

*Could the solution negatively affect the social well-being of individuals (health and safety), or intrude/restrict an individual's fundamental rights and freedom?*

Yes

No

Not Clear Yet

### High-risks

*Does the use case belong to one of the following domains: E.g. Categorisation of natural persons, Management and operation of critical infrastructure, Employment/HR, Healthcare, Private services and Public services and benefits, Law Enforcement, Migration, Democratic processes?*

Yes

No

Not Clear Yet